

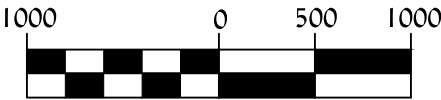


KEY:

- Property Line
-  The Springs Metropolitan District
-  The Springs South Metropolitan District



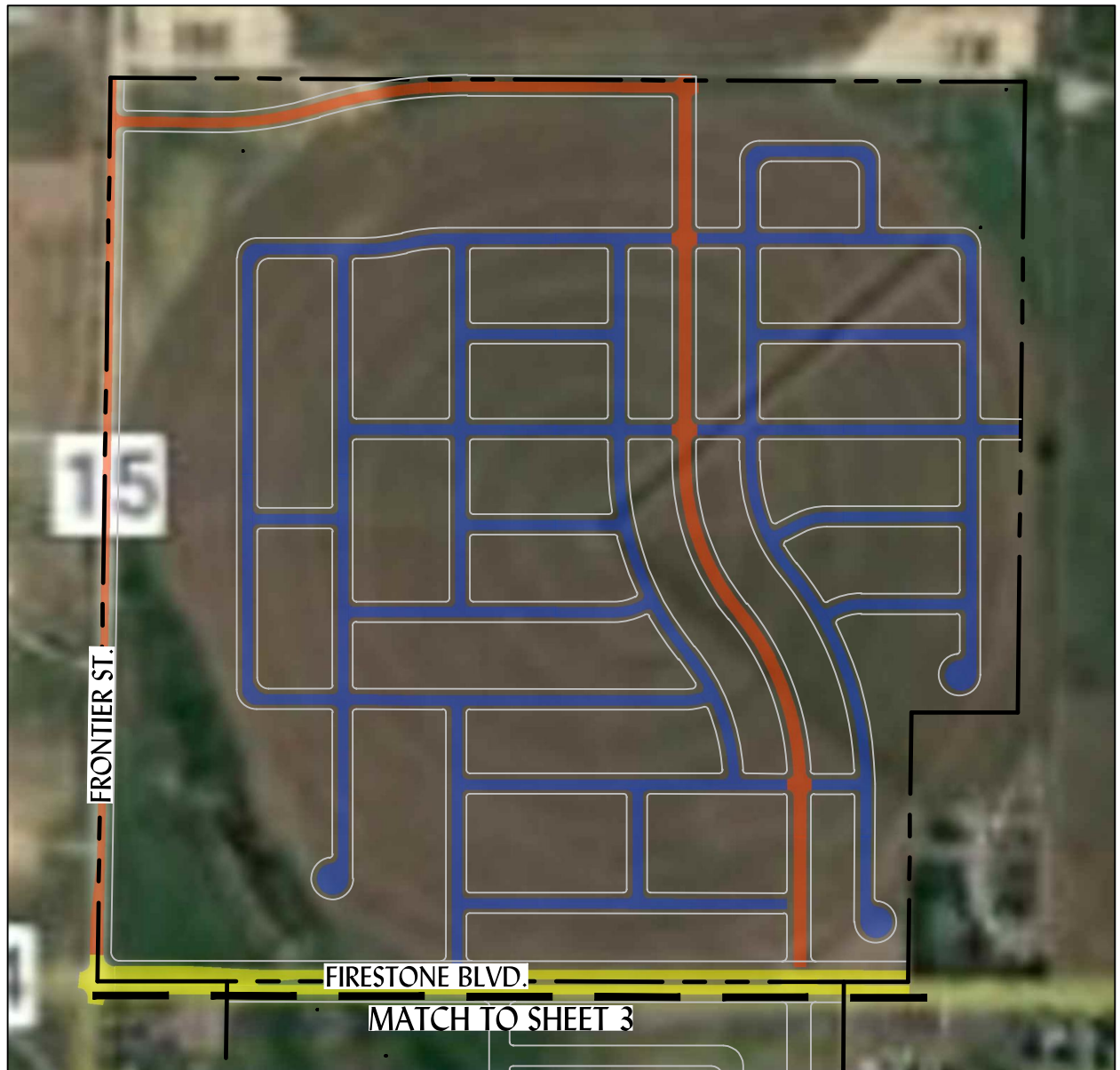
SCALE

1 inch = 1000 ft.

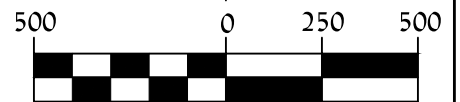
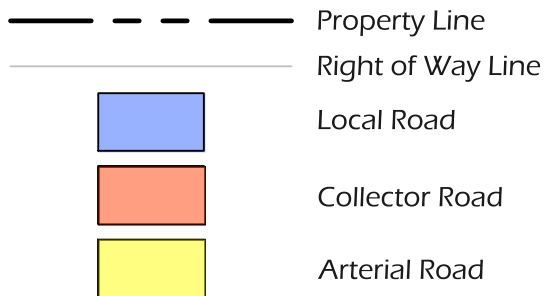


Vistosa
District Public Improvements Exhibit
District Boundaries

Prepared By: ICA	Horiz. Scale: 1 = 1000'	Sheet: 1 of 9	Job No.: 1061-03
Approved By: ACS	Vert. Scale: N/A	Date: 3/11/2022	



KEY:



SCALE
1 inch = 500 ft.



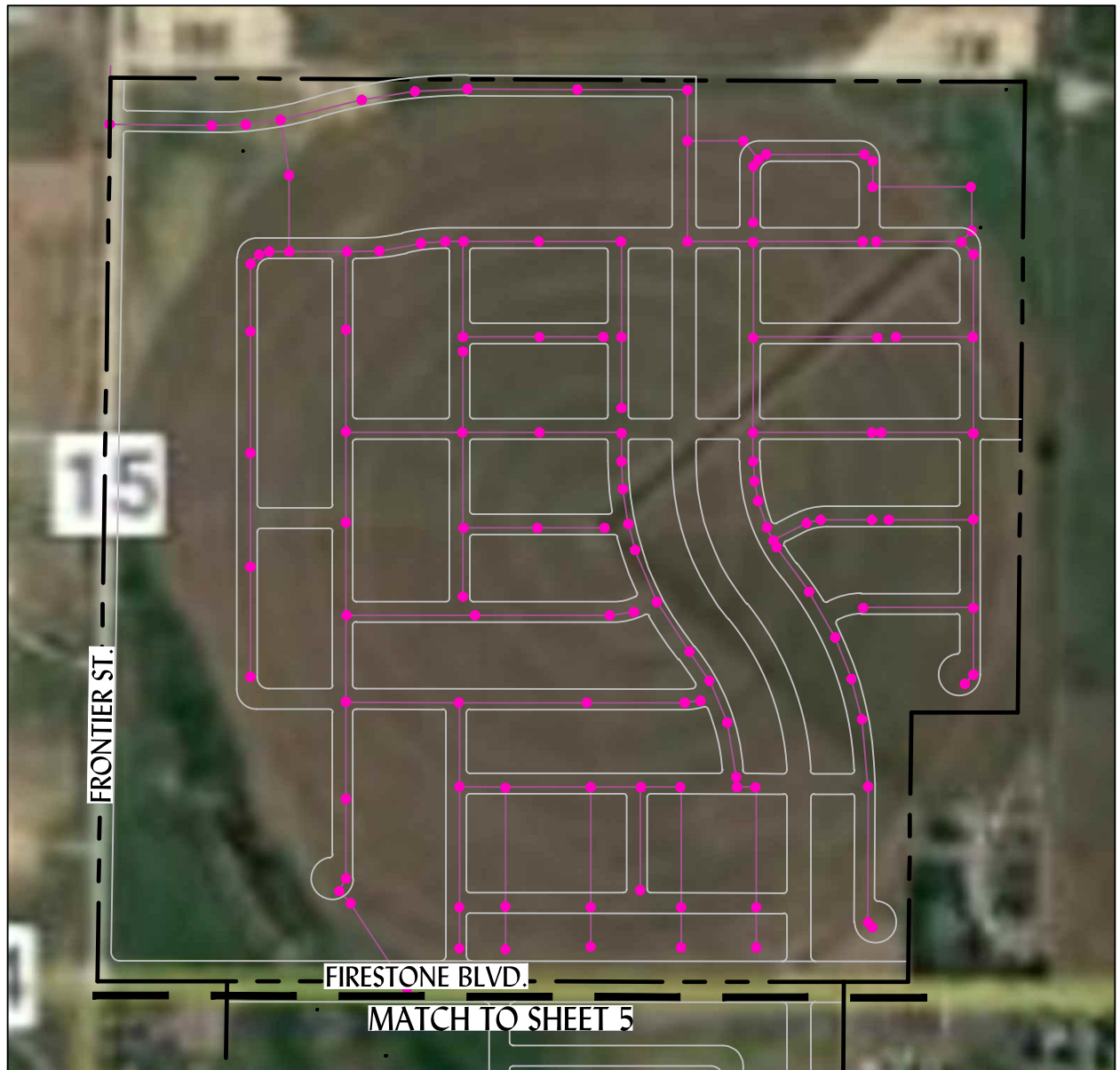
Vistosa
The Springs Metropolitan District
Street Plan

Prepared By: ICA
Approved By: ACS

Horiz. Scale: 1 = 500'
Vert. Scale: N/A

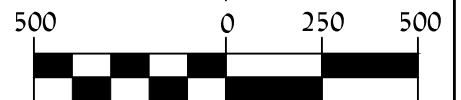
Sheet: 2 of 9
Date: 3/11/2022

Job No.: 1061-03



KEY:

- Property Line
- Right of Way Line
- 8" Sanitary Sewer Line
- Sanitary Manhole



SCALE
1 inch = 500 ft.



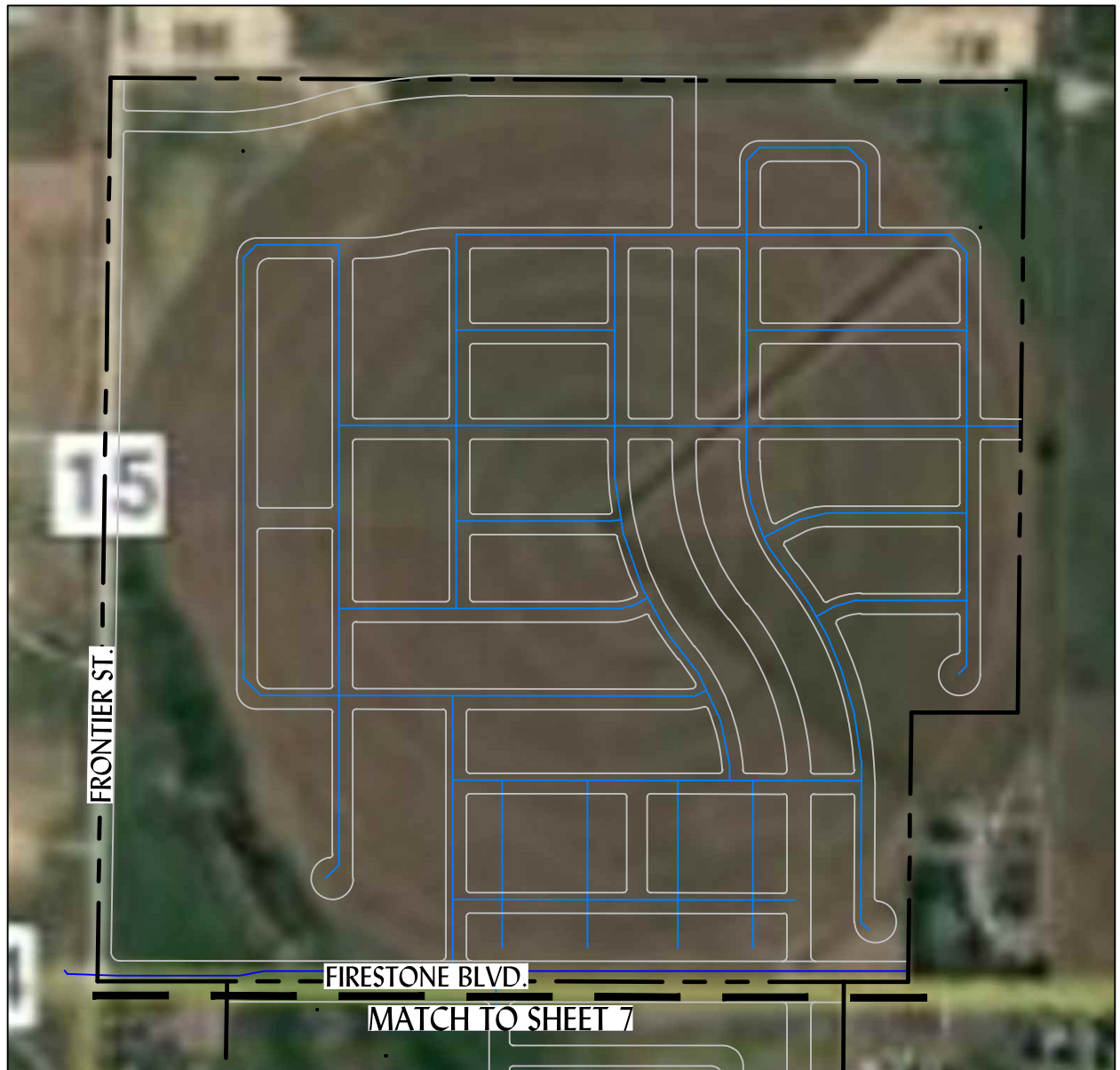
Vistosa
The Springs Metropolitan District
Sanitary Plan

Prepared By: ICA
Approved By: ACS

Horiz. Scale: 1 = 500'
Vert. Scale: N/A

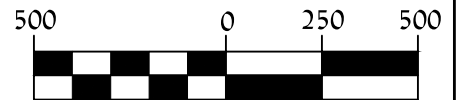
Sheet: 4 of 9
Date: 3/11/2022

Job No.: 1061-03



KEY:

- Property Line
- Right of Way Line
- 8" Water Line
- 16" Water Line



SCALE

1 inch = 500 ft.



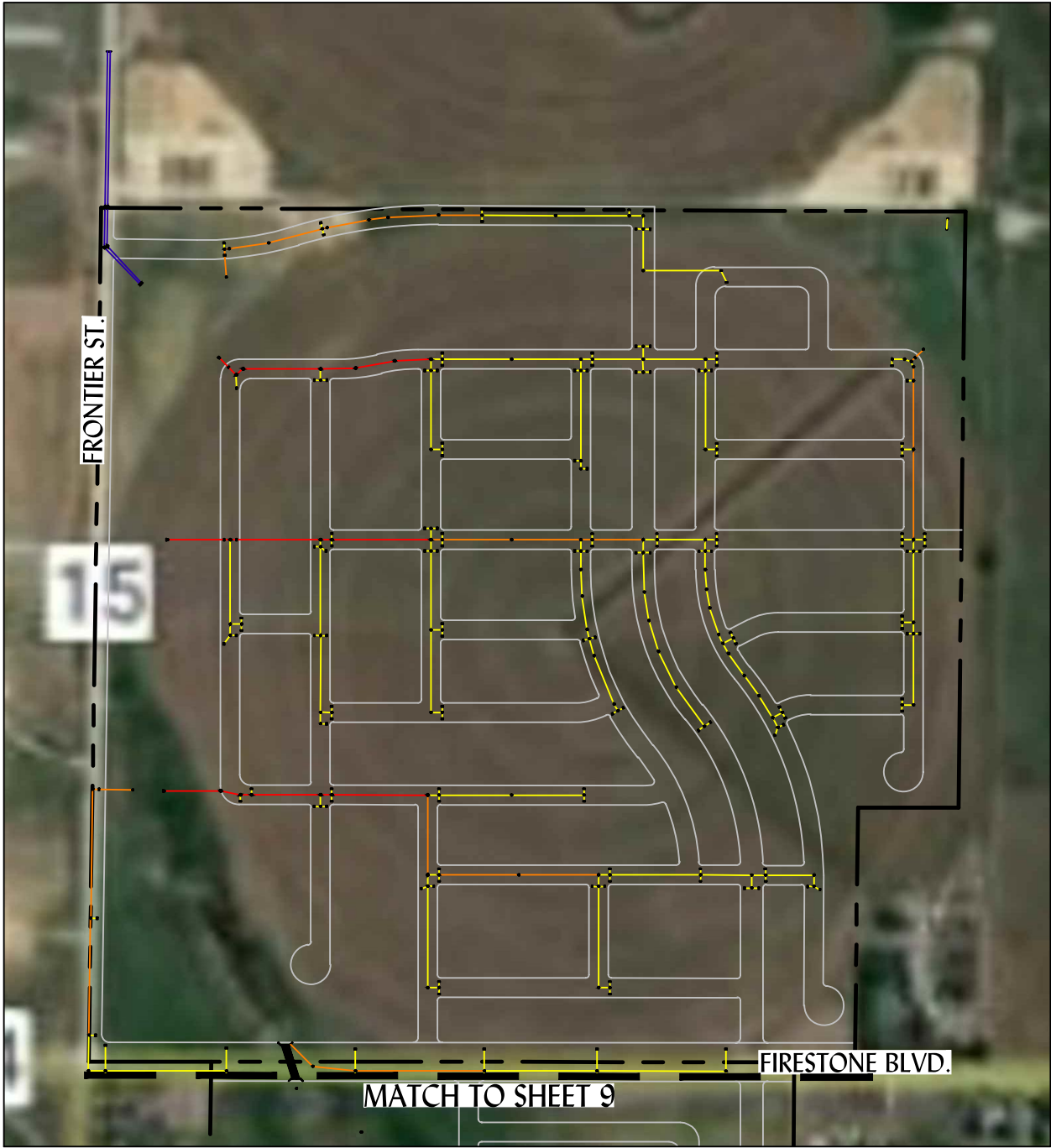
Vistosa
The Springs Metropolitan District
Water Plan

Prepared By: ICA
Approved By: ACS

Horiz. Scale: 1 = 500'
Vert. Scale: N/A

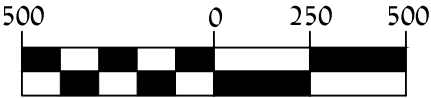
Sheet: 6 of 9
Date: 3/11/2022

Job No.: 1061-03



KEY:

- | | | | |
|-------|----------------------|---|---------------------|
| ----- | Property Line | ● | Storm Sewer Manhole |
| ----- | Right of Way Line | ■ | 5' Type R Inlet |
| ----- | 18" Storm Sewer Line | ■ | Outlet Structure |
| ----- | 24" Storm Sewer Line | ■ | Box Culvert |
| ----- | 36" Storm Sewer Line | | |
| ----- | 42" Storm Sewer Line | | |

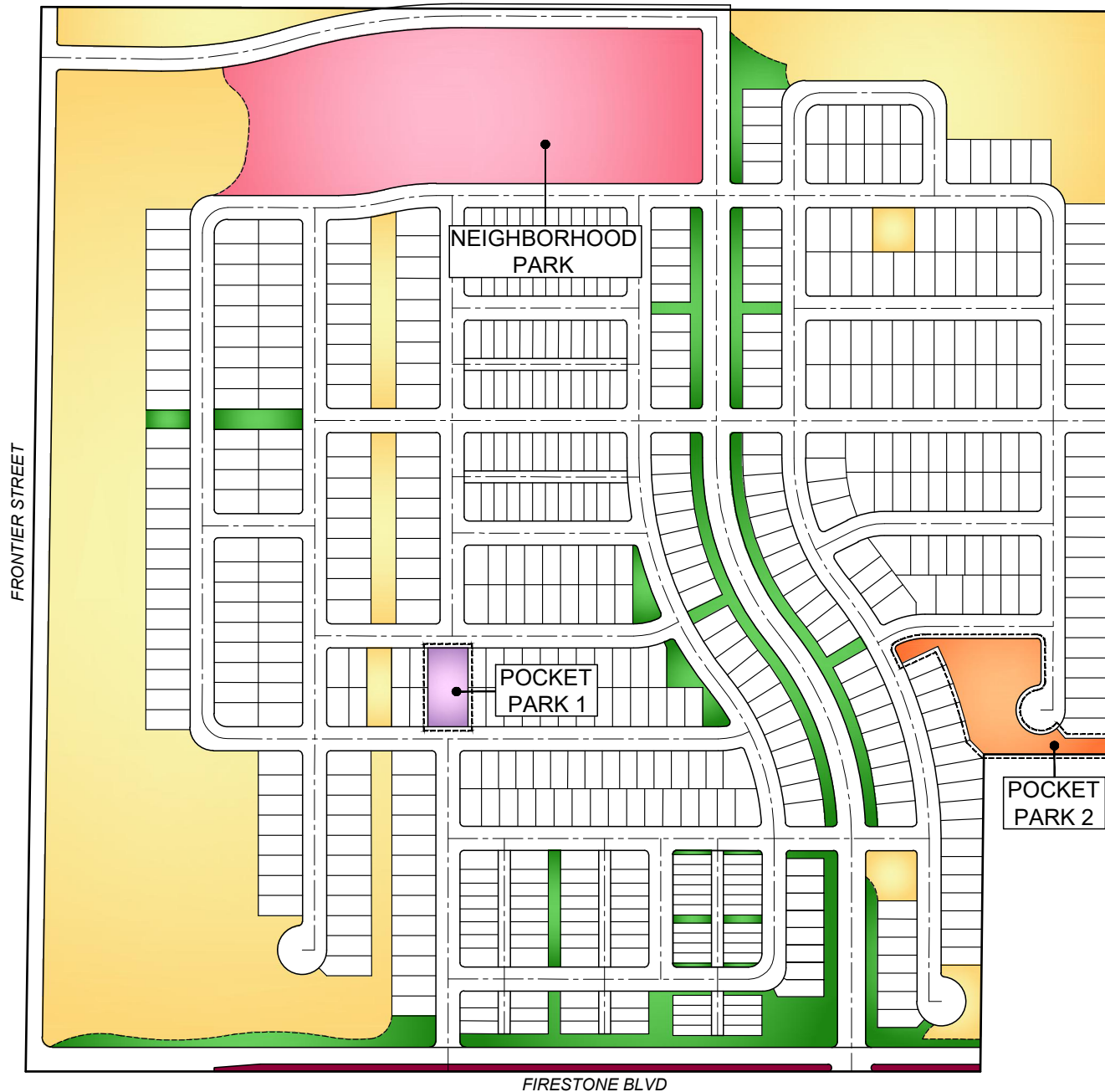


SCALE
1 inch = 500 ft.









Vistosa
The Springs Metropolitan District
Storm Plan

Prepared By: ICA	Horiz. Scale: 1 = 500'	Sheet: 8 of 9	Job No.: 1061-03
Approved By: ACS	Vert. Scale: N/A	Date: 3/11/2022	



LEGEND

SYMBOL	DESCRIPTION
	COMMON AREA - MANICURED
	COMMON AREA - NATIVE
	NEIGHBORHOOD PARK
	POCKET PARK 1
	POCKET PARK 2
	MEDIANS

Springs Metro District

Landscape Improvements

March 7, 2022

